

Welcome

To Walnut Creek



CHICAGO TITLE INSURANCE COMPANY



INDEX

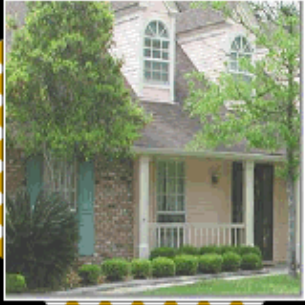
Welcome To Walnut Creek

History	3
Demographics	4
Contact List	5-7
Resident Services	8-9
Hospitals	10
Places Of Worship	11-12
Parks	13-14
Golf Courses	15
Transportation	16
Baby Care/Daycare	17
Senior Services	18-19
Pet Services	20
Fun Stuff For Kids	21
Places To Eat	22
Shopping	23
Sightseeing	24
Schools	22
School Scores	23-24

Walnut Creek



HISTORY



First Inhabitants

The first known inhabitants of the Walnut Creek area were Bolbones Indians. In March 1772, the first Spanish explorers arrived to the region. California became a possession of Mexico following the Mexican Revolution in 1821.

To encourage settlement in its newly-acquired territory, Mexico made large land grants, four of which were in the Walnut Creek area. A grant of nearly 18,000 acres in what today is the Ygnacio Valley was made to Dona Juana Sanchez de Pacheco, whose husband, Miguel, had been a war hero for Mexico. She deeded her property to two grandsons, Ygnacio and Ysidro Sibrian. Ygnacio Sibrian, the namesake of the Ygnacio Valley, built the first roofed residence in the valley around 1850. Following the Mexican-American War, California became a United States territory and subsequently a state in 1850.

From a "Crossroads" to a City

Walnut Creek was first known as "The Corners" -- where the two roads leading from Pacheco and Lafayette converged. Today those "corners" are at the intersection of Mt. Diablo Boulevard and North Main Street. The area's first settler was William Slusher, a squatter who built the first roofed abode on the bank of what was then known as "Nuts Creek" in 1849 (in the area of Liberty Bell Plaza).

In 1855, Milo Hough of Lafayette decided to develop The Corners and built a hotel called the "Walnut Creek House." A blacksmith shop and a store were soon built nearby. A year later, Hiram Penniman (who would later build the ranch house now used as the Shadelands Ranch Historical Museum) laid out the first town site and realigned what is now Main Street.

Continued growth led to the establishment of a U.S. Post Office in December 1862, around which time the community was renamed "Walnut Creek." The downtown street patterns laid out by pioneer Homer Shuey in his two original subdivisions in 1871-72 can still be found today.

On Oct. 21, 1914 the original town and surrounding area, comprising 500 acres, were incorporated as the eighth city in Contra Costa County. The City Council was originally called the City's Board of Trustees and its president was Harry Spencer. In 1928, state law was changed to allow cities to call their boards "city councils." On July 6, 1927, the first reference to a mayor of Walnut Creek was made for Mayor James F. Mauzy. On April 16, 1928, the Walnut Creek Board of Trustees officially renamed itself "Board of Councilmen", and on June 21, 1928, it became simple the "Town Council." However, the earliest reference to "City Council" was in the minutes of the Oct. 25, 1929 meeting.

DEMOGRAPHICS



Population

66,111 (Estimate: State of California 2006)

Housing Units

30,301 (approx.) 2,09 persons per household.

Physical Area

Approximately 19.45 square miles - incorporated area

Government

Walnut Creek incorporated as a city as of October 21, 1914

Form of Government

Council/Manager; General Law City

Average Home Price

Detached single-family home: \$857,136
(Source: Contra Costa Association of Realtors; July 2006)

Elevation

131 feet above sea level

Climate

Highest temperature recorded 115°F

Lowest temperature recorded 19°F

Average rainfall 20,6 inches

Sunny days (annually) 262

The average warmest month is July.

The average coolest month is December.

January is the average wettest month.

LOCAL WEATHER

	<i>Jan</i>	<i>Feb</i>	<i>Mar</i>	<i>Apr</i>	<i>May</i>	<i>Jun</i>	<i>Jul</i>	<i>Aug</i>	<i>Sep</i>	<i>Oct</i>	<i>Nov</i>	<i>Dec</i>
Avg. High	54°F	60°F	64°F	71°F	78°F	84°F	87°F	87°F	83°F	75°F	63°F	55°F
Avg. Low	39°F	42°F	44°F	46°F	50°F	54°F	55°F	55°F	54°F	49°F	43°F	39°F
Mean	56°F	51°F	54°F	59°F	64°F	69°F	71°F	71°F	69°F	63°F	53°F	46°F
Avg. Precip.	4.25	3.81	3.24	1.04	0.46	0.12	0.02	0.08	0.24	0.94	2.59	2.79

CONTACT LIST



Emergency Numbers

Fire & Rescue	9-1-1
Contra Costa County Fire Protection District	(925) 941-3300
Highway Patrol	9-1-1
Police Patrol	(925) 943-5844
Police Emergency	9-1-1
Police Dispatch	(925) 935-6400
Office of the Chief of Police	(925) 943-5869
Kaiser Permanente Medical Center - Emergency	(925) 295-4800
Kaiser Permanente Medical Center	(925) 295-4000
John Muir Hospital	(925) 939-3000

City of Walnut Creek

City Hall

1666 North Main Street,
Walnut Creek, CA 94596
(925) 943-5800

City Manager	(925) 943-5812
Mayor's Office	(925) 943-5812
Public Information Officer	(925) 943-5859
City Clerk	(925) 943-5818
City Attorney's Office	(925) 943-5813
Business licenses	(925) 943-5821
Community Development Department	(925) 943-5834
Arts, Recreation & Community Services Department	(925) 943-5848
Police Department	(925) 943-5844
Public Services Department	(925) 943-5854
Civic Arts Education	(925) 943-5846
Parks Division	(925) 943-5855
Open Space Division	(925) 943-5899
Human Resources	(925) 943-5815
Regional Center for the Arts	(925) 295-1400
Youth & Family Program Coordinator	(925) 256-3503
Economic Development	(925) 943-5899



CONTACT LIST



Air Pollution

Bay Area Air Quality Management District (415) 771-6000
Complaints only (toll-free) 1-800-334-6367
Illegal burns (Consolidated Fire District) (925) 930-5500

Business

Walnut Creek Chamber of Commerce (925) 934-2007
1777 Botelho Dr. #103
Better Business Bureau, 510-16th, Oakland (510) 238-1000
Business License, City Hall, 1666 N. Main St (925) 943-5821

Courts

Walnut Creek-Danville Superior Court
640 Ygnacio Valley Rd., Walnut Creek
Jury Services (925) 646-6564
Civil Division (925) 646-6579
Criminal Division (925) 646-6572
Small claims (925) 646-6578
Traffic citations (925) 646-6572

Fire

Contra Costa Fire Protection District
Administrative Offices (925) 941-3300
Fire Chief (925) 941-3300
Community Events (925) 941-3327
Fire Permits (925) 941-3671

Licenses & Permits

Birth certificates (925) 646-2360
Birth certificates (younger than one year) (925) 646-2517
Death Certificates (925) 646-2365
Block party permit (City Hall) (925) 943-5899
Building permit (City Hall) (925) 943-5834
Marriage licenses (822 Main St., Martinez) (925) 646-2956
Fishing/hunting licenses (obtain at Long's Drug)
Passports (WC Main Post Office) (925) 935-0256
WC Main Post Office (2070 N. Broadway) (925) 935-0256
Solicitor's permit (City Hall) (925) 943-5821
Zoning regulations (City Hall) (925) 256-3558





CONTACT LIST

Walnut Creek Police Department

1666 N Main St
Walnut Creek, CA 94596
(925) 943-5844

Emergency	9-1-1
All other calls for police service	(925) 935-6400
Police Business	(925) 943-5844
Records Division (Mon-Fri 8AM-5PM)	(925) 943-5890
Office of the Chief of Police	(925) 943-5869
Anonymous Tip Line	(925) 943-5865
Child Car Seat Inspections, Community Traffic Unit	(925) 943-5458

Pests

Contra Costa Mosquito & Vector Control District **(925) 685-9301**

Streets

Sweeping, drainage, repair, restriping **(925) 943-5864**

Traffic Controls

Repair of stop signs, traffic signals or street signs **(925) 256-3529**

Requests for new stop signs, signals **(925) 256-3529**

Taxes

Tax Collector's Office Information **(925) 646-4122**

Voter Registration

City Clerk, Mon-Fri, 8:00 a.m. to 5:00 p.m. City Hall, **(925) 314-3401**

County Elections Office, 524 Main Street, Martinez **(925) 646-4166**

League of Women Voters of Diablo Valley **(925) 283-2235**

Post Office

Walnut Creek Main Branch **1-800-ASK-USPS**
 2070 N. Broadway **or (925) 935-0256**
 (Mon - Fri 8:30 a.m.-5:00 p.m., Sat. 9:00 a.m.-3:00 p.m.)

1221 Rossmoor Pkwy **1-800-ASK-USPS**
 (Mon - Fri 9:00 a.m.-5:00 p.m.) **or (925) 933-2702**

1922 Tice Valley Blvd **1-800-ASK-USPS**
 (Mon - Fri 9:00 a.m.-5:00 p.m.) **or (925) 947-0195**

2244 Oak Grove Rd **1-800-ASK-USPS**
 (Mon - Fri 9:30 a.m.-5:00 p.m.) **or (925) 287-9267**



RESIDENT SERVICES



Electricity

Pacific Gas and Electric
Electrical Outages

1-800-743-5000

1-800-743-5002

Telephone (Local Service)

AT&T (powered by SBC)
AT&T Disconnect or Transfer Service

1-800-310-2355

1-800-288-2020

Garbage Collection

Allied Waste
Central Contra Costa Solid Waste Authority
Hazardous Waste Disposal

(925) 603-1144

(925) 906-1801

1-800-646-1431

Recycling

Walnut Creek Recycling Center, 480 Lawrence Way
Valley Waste Management Curbside recycling program

(925) 935-8900

(925) 935-8900

Water

Contra Costa Water District
1331 Concord Ave, Concord
Emergency - to report water leaks (M-F 8:00 a.m.-3:30 p.m.)
Emergency (after hours)
East Bay Municipal Utility District - EBMUD (water)
Central Contra Costa Sanitary District (Sewer)
5019 Imhoff Place, Martinez
Sewer overflows or emergencies

(925) 688-8000

(925) 688-8095

(925) 688-8397

1-866-403-2683

(925) 228-9500

(925) 933-0955 or

(925) 933-0990

Cable TV

Comcast
Channel 6 studio (community access)
Astound Broadband
(Serves households in incorporated Walnut Creek)

1-800 945-2288

(925) 933-6264

1-800-427-8686



RESIDENT SERVICES



DMV

Department of Motor Vehicles (DMV)
Walnut Creek office, 1910 N. Broadway

1-800 777-0133

Newspaper

San Francisco Chronicle
Contra Costa Times
Walnut Creek Journal
Rossmoor News
(Weekly newspaper to residents in Rossmoor)

1-800 281-2476
(925) 935-2525
(925) 943-8242
(925) 988-7800

Library

Walnut Creek Public Library Downtown
1644 N. Broadway
Mon. - Thu. 10:00 a.m.- 8:00 p.m.
Fri. & Sat. 10:00 a.m.- 6:00 p.m.
Ygnacio Valley
2661 Oak Grove Rd.
Mon. - Thu. 10:00 a.m.- 8:00 p.m.
Fri. & Sat. 10:00 a.m.- 6:00 p.m.

(925) 646-6773

(925) 938-1481

Volunteer Information

The Volunteer Center
2401 Shadelands Dr. Suite 112
Walnut Creek

(925) 472-5760



HOSPITALS



Medical / Health

EMERGENCY

9-1-1

Kaiser Permanente Medical Center, 1425 S. Main St.
Urgent Care, same-day appointments

(925) 295-4000
(925) 295-4070

John Muir Medical Center, 1601 Ygnacio Valley Road
Physician referral

(925) 939-3000
(925) 947-5380

Sequoia Surgery Pavilion, 2405 Shadelands Dr. Suite# 200

(925) 935-6700

Public Health (general information)

(925) 313-6710

Contra Costa Health Services,
Sexually Transmitted Disease Information

(925) 313-6750

Battered Women & Domestic Violence
Family Crisis 24-hour line

1-888 215-5555
1-800 833-2900



PLACES OF WORSHIP



Amoy Taiwanese Congregation

2100 Tice Valley Blvd, Walnut Creek
(925) 937-2824

Calvary Walnut Creek

1950 1st Ave, Walnut Creek
(925) 465-4110

Chabad of Contra Costa

1671 Newell Ave, Walnut Creek
(925) 937-4101

Chinese Bethel Baptist Church

535 Walnut Ave, Walnut Creek
(925) 937-3789

Christian Science Church

2 Eckley Ln, Walnut Creek
(925) 934-4527

Church of Christ

500 Minert Rd, Walnut Creek
(925) 825-7810

Church of Jesus Christ of LDS

100 N Gate Rd, Walnut Creek
(925) 935-2507

Church of Jesus Christ of LDS

2369 Overlook Dr, Walnut Creek
(925) 946-0221

Church of Jesus Christ WC

2396 Overlook Dr, Walnut Creek
(925) 280-6541

Clayton Valley Assembly of God

1547 Palos Verdes Mall # 187, Walnut Creek
(925) 672-6642

Community of Christ-Walnut CRK

1786 2nd Ave, Walnut Creek
(925) 939-3595

Congregation B'nai Shalom

74 Eckley Ln, Walnut Creek
(925) 934-9446

Congregation B'nai Tikvah

25 Hillcroft Way, Walnut Creek
(925) 933-5397

Contra Costa Gospel Church

2460 Buena Vista Ave, Walnut Creek
(925) 933-0112

Contra Costa Korean Presbyterian Church

2449 Buena Vista Ave, Walnut Creek
(925) 932-2963

Creek Church Community

1196 Boulevard Way, Walnut Creek
(925) 934-4321

Eckankar-California Satsang

73 Willowbrook Ln, Walnut Creek
(925) 944-0118

Faith Christian Fellowship

860 Bancroft Rd, Walnut Creek
(925) 934-2099

First Baptist Church

2336 Buena Vista Ave, Walnut Creek
(925) 934-2139

Formosan UMC of East Bay

1755 Sunnysvale Ave, Walnut Creek
(925) 943-1925

Fountain of Life Antioch

1755 Locust St, Walnut Creek
(925) 755-8779

Grace Presbyterian Church

2100 Tice Valley Blvd, Walnut Creek
(925) 935-2100

Hillside Covenant Church

2060 Magnolia Way, Walnut Creek
(925) 934-1110

Inter Faith Council

1543 Sunnysvale Ave, Walnut Creek
(925) 933-6030

PLACES OF WORSHIP



Japanese Christian Church
1955 Geary Rd, Walnut Creek
(925) 944-5252

Jehovah's Witnesses
2207 Buena Vista Ave
Walnut Creek
(925) 939-9029

Mt. Diablo Unitarian Universalist Church
55 Eckley Ln, Walnut Creek
(925) 934-3135

New Beginnings International Church
1755 Locust St, Walnut Creek
(925) 551-7668

Northcreek Church
2255 Ygnacio Valley Rd
Walnut Creek
(925) 210-9036

Oak Park Christian Center
Walnut Creek
(925) 934-4336

Renewal Project
1717 N California Blvd
Walnut Creek
(925) 947-1490

Robert D Stranathan CSB
39 Quail CT # 306, Walnut Creek
(925) 930-9977

Rossmoor Pilgrim Congregational Church
1012 Stanley Dollar Dr
Walnut Creek
(925) 287-1500

Saint Matthew Church
399 Wiget Ln, Walnut Creek
(925) 932-1955

Shell Ridge Community Church
200 La Casa Vilia, Walnut Creek
(925) 935-3250

Society of Servants of God
176 Los Altos Ave, Walnut Creek
(925) 934-8467

Spiritualist Church-Two Worlds
Walnut Creek
(925) 930-6663

St Anne's Catholic Church
1600 Rossmoor Pkwy, Walnut Creek
(925) 932-2324

St Francis of Assisi Anglican
224 Linda Mesa Ave, Walnut Creek
(925) 906-9561

St John Vianney Church
1650 Ygnacio Valley Rd
Walnut Creek
(925) 939-7911

St Luke's Episcopal Church
1001 Golden Rain Rd, Walnut Creek
(925) 937-4820

St Luke's Lutheran Church
2491 San Miguel Dr, Walnut Creek
(925) 935-0160

St Mary's Church
2039 Mount Diablo Blvd
Walnut Creek
(925) 891-8900

St Stephen's Catholic Church
1101 Keaveny CT, Walnut Creek
(925) 939-3826

St. Paul's, Episcopal Church
1924 Trinity Ave, Walnut Creek
(925) 934-2324

Tice Valley United Methodist
1012 Stanley Dollar Dr
Walnut Creek
(925) 937-4535

Trinity Lutheran Church
2317 Buena Vista Ave
Walnut Creek
(925) 935-3362

Trinity United Reformed Church
1963 Tice Valley Blvd
Walnut Creek
(925) 280-9895

Unity Center of Walnut Creek
1871 Geary Rd, Walnut Creek
(925) 937-2191

Walnut Avenue Church Community Pre-School
260 Walnut Ave, Walnut Creek
(925) 937-7063

Walnut Avenue United Methodist
260 Walnut Ave, Walnut Creek
(925) 933-0888

Walnut Creek Friends Church
1950 1st Ave, Walnut Creek
(925) 935-7530

Walnut Creek Presbyterian Church
1801 Lacassie Ave, Walnut Creek
(925) 935-1574

Walnut Creek United Methodist Church
1543 Sunnyvale Ave, Walnut Creek
(925) 934-4208

Ygnacio Valley Baptist Church
535 Walnut Ave, Walnut Creek
(925) 939-2333

Young Life Regional Training
2363 Boulevard Cir # 3
Walnut Creek
(925) 934-1334

PARKS



**City of Walnut Creek
Parks Division
1666 North Main Street,
Walnut Creek, CA 94596
(925) 943-5855**

Heather Farm Park

301 N. San Carlos Drive at Ygnacio Valley Road

Heather Farm Park facilities include the Clarke Swim Center, 10 tennis courts at the Walnut Creek Tennis Center, one sand volleyball court, playgrounds, five softball fields, soccer field, basketball court, two lakes, snack shack (summer months only) and exercise par course. The sand volleyball court can be reserved for use in conjunction with your picnic. The Heather Farm Group Picnic area has seating for 104 as well as six standard-size barbecue's. The area is turfed with some shade, but there is no access to running water or electricity. Maximum use: 300 people.

(925) 943-5858

Facility Reservations

Larkey Park

Buena Vista Avenue/First Avenue

Larkey Park facilities include the Larkey Swim Center, Lindsay Wildlife Museum, four tennis courts, one sand volleyball court, two horseshoe pits, playgrounds and basketball court. The sand volleyball courts can be reserved for use in conjunction with your picnic. Larkey Park Large Group Picnic Area has seating for 104 and four standard-sized barbecues. The general area is turfed with some shade and a drinking fountain. Maximum use: 300 people.

(925) 943-5858

Facility Reservations

Civic Park

1375 Civic Drive at North Broadway

Civic Park Community Center is nestled among oak and redwood trees and features immediate access to large grassy areas. The park also offers tennis courts, children's play area, picnic area, community center with seniors' programs, gazebo, native plant/butterfly habitat garden, restrooms, connection to the Iron Horse Trail, entrance to the Creek Walk.

Diablo Foothills

1700 Castle Rock Road

Diablo Foothills is an imposing gateway to the beautiful parklands of Castle Rock Park or Mount Diablo. Access is by way of the Briones-to-Mt. Diablo Regional Trail, which leads up the mountain from Walnut Creek.

Howe Homestead Park

2950 Walnut Boulevard

Crossing over the old stone bridge from the Howe Homestead parking lot one gets an impression of the area as it appeared in the late 1930's. The park is named after James P. Howe one of the earliest and best-known Associated Press world correspondents. Jim and his wife Mia purchased the property in 1910 and lived there till 1970.

East Bay Regional Park District

2950 Peralta Oaks Court

P.O. Box 5381

Oakland, CA 94605

(510) 562-PARK

PARKS



	Basket Ball	BBQ	Open Turf	Picnic Tables	Play Ground	Rest Rooms	Soccer Field	Baseball	Tennis Courts
Arbolado Park	X	X		X	X	X	X		X
Arbolado Drive at Doncaster Drive									
Castle Rock Youth Sports Park						X	X	X	
Hutchinson Road									
Diablo Shadows Park		X		X	X				
Diablo Shadow Drive									
El Divisadero Neighborhood Park			X						
El Divisadero									
Rudgear Park	X	X		X	X	X	X	X	X
Rudgear Road									
San Miguel Park			X		X				X
San Jose Court									
Tice Valley Neighborhood Park		X		X	X	X	X	X	
2055 Tice Valley Blvd.									
Walden Park	X	X	X	X	X	X			
Oak Road									

Open Space

Acalanes Ridge Open Space

Above Highway 680/24 intersection. There are trailheads on Pleasant Hill Road just north of Reliez Valley Road and on Sousa Drive.

Short hikes with sweeping vistas of Mount Diablo, as well as hidden sylvan creekside settings, perfect for cooling off on a hot summer day.

Lime Ridge Open Space

Off Valley Vista Road near Boundary Oak Golf Course

Hiking throughout; biking in marked areas

Shell Ridge Open Space

1035 Castle Rock Road, 1/2 mile past Northgate High School

Approximately 31 miles of hiking, biking and equestrian trails. Bikes are permitted only on paved and unpaved roads over eight feet in width. Within Shell Ridges is the Borges Ranch, a site on the National Register of Historic Places. A working cattle ranch complete with farm animals, it provides a glimpse at life a century ago.

Sugarloaf Open Space Recreation Area

2161 Youngs Valley Road (off Rudgear Road)

Picnic and group barbecue areas, rest rooms, extensive hiking and equestrian trails (with trail connections to Rudgear Park and Shell Ridge Open Space) Sugarloaf Open Space also offers group camping by reservation. Call Ranger Bruce Weidman, (925) 944-5766.



GOLF COURSES

Private

Rossmoor Golf Course
(925) 933-2607
1010 Stanley Dollar Dr
Walnut Creek
1 mile from center of Walnut Creek

Round Hill Golf & Country Club
(925) 934-8211
3169 Round Hill Rd
Alamo
4 miles from center of Walnut Creek

Moraga Country Club
(925) 376-2200
1600 Saint Andrews Dr
Moraga, CA 94556
4 miles from center of Walnut Creek

Orinda Country Club
(925) 254-0811
315 Camino Sobrante
Orinda, CA 94563
6 miles from center of Walnut Creek

Diablo Country Club
(925) 837-9233
1700 Clubhouse Rd
Diablo
7 miles from center of Walnut Creek

Contra Costa Country Club
(925) 685-8288
801 Golf Club Rd
Pleasant Hill, CA 94523
7 miles from center of Walnut Creek

Blackhawk Country Club
(925) 736-6550
599 Blackhawk Club Dr
Blackhawk
9 miles from center of Walnut Creek

Crow Canyon Country Club
(925) 735-5700
711 Silver Lake Dr
Danville
9 miles from center of Walnut Creek

Public

Diablo Hills Golf Course
(925) 939-7372
1551 Marchbanks Dr
Walnut Creek, CA 94598
4 miles from center of Walnut Creek

Boundary Oak
(925) 934-6212
3800 Valley Vista Rd
Walnut Creek, CA
4 miles from center of Walnut Creek

Grayson Woods Golf Course
(925) 935-7277
400 Iron Hill St
Pleasant Hill, CA 94523
6 miles from center of Walnut Creek

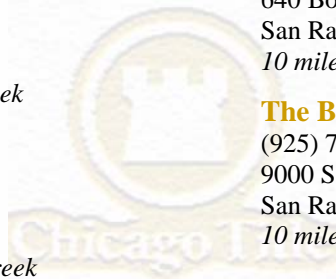
Buchanan Fields Golf Course
(925) 682-1846
1091 Concord Ave
Concord, CA 94520
8 miles from center of Walnut Creek

Pine Meadows Public Golf Course
(925) 228-2881
451 Vine Hill Way
Martinez, CA 94553
8 miles from center of Walnut Creek

Canyon Lakes Country Club
(925) 735-6511
640 Bollinger Canyon Way
San Ramon
10 miles from center of Walnut Creek

Diablo Creek Golf Course
(925) 686-6262
4050 Port Chicago Hwy
Concord, CA 94520
10 miles from center of Walnut Creek

The Bridges Golf Club
(925) 735-4253
9000 S. Gale Ridge Road
San Ramon
10 miles from center of Walnut Creek





TRANSPORTATION

BART (925) 676-2278
TRANSIT Bay Area Rapid Transit District
(BART - Bay Area provider of rapid transit serving 9 counties)

County Connection (925) 676-7500
(Public transit provider for Walnut Creek)

Altamont Commuter Express 1-800-411-7245
(ACE) Train

Travel Information (925) 817-1717
(Bay Area Real Time Traffic Information Line)

Senior Mini Bus (925) 933-1434
Bus Service for Walnut Creek Seniors Club members

Airports

Oakland International Airport (510) 563-3300

San Francisco Airport (650) 821-8211

San Jose Airport (408) 277-4759

Car Rental

Hertz
2042 North Main St.
Walnut Creek
(925) 280-2827

Budget
305 N Civic Dr
Walnut Creek
(925) 938-5805

Avis
1345 Treat Blvd
Walnut Creek
(925) 933-0333



BABY CARE/DAY CARE



Child Care Resources

Contra Costa Child Care Council (925) 676-KIDS
Child care referrals etc

Trustline 1-800 822-8490
background checks on child care providers exempt from licensing

Alice's Montessori Learning

(925) 947-0603
3158 Putnam Blvd, Walnut Creek

Bianchi Schools Pre-School

(925) 935-3276
2521 Walnut Blvd, Walnut Creek

Children's World Learning Center

(925) 935-5562
2875 Mitchell Dr, Walnut Creek

Contra Costa Christian School

(925) 934-4964
2721 Larkey Lane, Walnut Creek

Dorris-Eaton School

(925) 933-5225
1847 Newell Ave, Walnut Creek

Early Beginnings

(925) 705-1194
133 Firestone Dr, Walnut Creek

First Baptist Preschool

(925) 935-1587
2336 Buena Vista Ave, Walnut Creek

Garden Gate Montessori School

(925) 943-7484
63 Sandy Ln, Walnut Creek

Grace Cooperative Pre-School

(925) 935-2100
2100 Tice Valley Blvd, Walnut Creek

Kid Time Inc

(925) 930-6550
1547 Geary Rd, Walnut Creek

KinderWorld Walnut Creek

(925) 935-8560
1029 Homestead Ave, Walnut Creek

Morning Star Pre-School Inc

(925) 947-2952
2131 Olympic Blvd, Walnut Creek

Mt Diablo Parent Co-Op Preschool

(925) 932-6902
55 Eckley Ln, Walnut Creek

My School

(925) 947-1399
535 Walnut Ave, Walnut Creek

New World CDC

(925) 939-1688
1919 Geary Rd, Walnut Creek

North Creek Academy & Preschool

(925) 954-6322
2303 Ygnacio Valley Rd, Walnut Creek

Pied Piper Pre-School

(925) 932-3816
2263 Whyte Park Ave, Walnut Creek

Saybrook Learning Center

(925) 937-8211
1355 Walden, Walnut Creek

Seven Hills School

(925) 933-0666
975 North San Carlos Dr, Walnut Creek

Springfield Montessori School

(925) 944-0626
2780 Mitchell Dr, Walnut Creek

Step Ahead Learning Center

(925) 943-6199
1338 Las Juntas Way, Walnut Creek

Trinity Lutheran Church

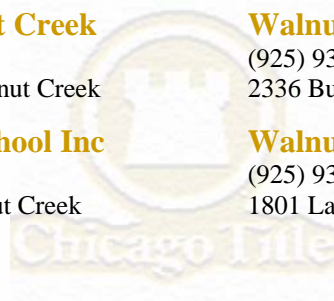
(925) 935-3362
2317 Buena Vista Ave, Walnut Creek

Walnut Creek Christian Academy

(925) 935-1587
2336 Buena Vista Ave, Walnut Creek

Walnut Creek Presbyterian School

(925) 935-1669
1801 Lacassie Ave, Walnut Creek



SENIOR SERVICES



Senior Information and Referral

(925) 313-1720

Contra Costa County Office on Aging

1-800-510-2020

Senior Information

Active Seniors

Walnut Creek Seniors' Club

(925) 943-5851

Are you an active adult looking for exciting recreational, social and volunteer opportunities. Visit the Civic Park Community Center, an active place for active adults, age 50 and better, where a dynamic, successful recreation program flourishes with more than 2,000 members. The Seniors' Club provides an upbeat staff, companionship and stimulating programs and services. If you haven't found us yet, a lot of fun awaits you. The Walnut Creek Senior's Club offers a variety of classes and activities for adults, age 50 and better such as Painting, Ballroom Dancing, Low Impact Aerobics, Yoga, Tennis, Bowling, Bridge and many more.

Senior Services

Transportation

BART tickets are available to seniors 65 and older for \$9. (\$24 value).

County Connection Bus passes are available. Call (925) 943-5851 for information.

Health Care

Blood Pressure Screening

9:30-11 a.m. on the second Wednesday of every month on a drop-in basis.

Call (925) 943-5851 for information.

Medical Insurance Counseling

Held the 2nd and 4th Tuesday of each month, 1:45-3:15 p.m., by appointment only.

Call (925) 943-5851.

Have your policy evaluated or bills examined.

Pedicures and Manicures

Every other Thursday, 2-4 p.m.

Call (925) 943-5851 for an appointment.

Help at Home

Home Chore and Respite counseling

A free service provided by Senior Outreach Services that refers affordable home care workers to elders in need of assistance.

Call (925) 937-8311 for more information.

Hot Meals

Hot Meals are served at noon, Monday through Thursday, and 11:30 am, Friday, to anyone over 60 years. Call (925) 937-7310, 10 am-noon one day ahead for a reservation. Suggested donation is \$2.

Legal Assistance

Case Management

Is available through Diablo Valley Foundation for free in-home assessments and consultation.

Call (925) 945-8040 for an appointment.

Investment Counseling

1:30 to 3:30 p.m. the first Tuesday of each month. Call (925) 943-5851 for an appointment. FREE.

Senior legal services

Free consultations with an attorney every second Thursday from 11 am-2 p.m.

Call (925) 943-5851 for an appointment.

Simple Wills Preparation

Simple wills available the first Monday of each month from 1:30-3:00 p.m.

Call (925) 943-5851 for an appointment.

SENIOR SERVICES



Senior Information and Referral

(925) 313-1720

Contra Costa County Office on Aging

1-800-510-2020

Senior Information

Retirement Communities

Rossmoor Realty

(925) 932-1162

1641 Tice Valley Blvd
Walnut Creek, CA 94595

Atria Montego Heights

(925) 938-6611

1400 Montego
Walnut Creek, CA 94598

Atria Valley View

(925) 937-7300

1228 Rossmoor Pkwy
Walnut Creek, CA 94595

Byron Park

(925) 937-1700

1700 Tice Valley Blvd
Walnut Creek, CA 94595

Sunrise of Walnut Creek

(925) 932-3500

2175 Ygnacio Valley Rd
Walnut Creek, CA 94598

The Heritage Pointe Senior Apartments

(925) 943-7427

1785 Shuey Avenue
Walnut Creek, CA 94596

Tiffany Court

(925) 933-5555

1866 San Miguel Drive
Walnut Creek, CA 94596



PET SERVICES



Unwanted or stray animals

County Animal Control (925)-335-8300
4800 Imhoff Place, Martinez
(Well-lit, 24-hour depository)

Animal Hospitals

Civic Feline Clinic (925) 930-9226
2030 N. Broadway, Walnut Creek

Encina Veterinary Hospital (925) 937-5000
2803 Ygnacio Valley Rd, Walnut Creek

Valley Veterinary Hospital (925) 932-2420
1780 Ygnacio Valley Rd, Walnut Creek

VCA Cottage Animal Hospital (925) 935-9080
1590 Boulevard Way, Walnut Creek

Dog licenses (925) 335-8310
County Animal Shelter, Martinez

Injured wild animal (925) 935-1978
Lindsay Museum
1931 First Ave, Walnut Creek

Lost and found pets (925) 335-8330
County Animal Shelter, Martinez

Spay and neuter clinic (925) 335-8320
County Animal Shelter, Martinez

Vicious animal (925) 335-8300
During Daytime

Pet Stores & Pet Services

PETCO
1301 S California St
Walnut Creek
(925) 988-9370

North Main Pet Lodge
2818 N Main
Walnut Creek
(925) 256-0646

Animal Crackers
1541 Palos Verdes Mall
Walnut Creek
(925) 930-9119
*Pet Grooming and Animal
Hygiene*

Four Paws Grooming
2818 North Main St
Walnut Creek
(925) 287-8131

Cats A Groomin
1829 Mt Diablo Blvd # D
Walnut Creek
(925) 935-5177

FUN STUFF FOR KIDS



The City of Walnut Creek

www.walnut-creek.org

The City of Walnut Creek offers a variety of fun stuff for kids and their families such as sports, language classes, theater, crafts, festivals and family events. Why not sign up for a Parent & Me Ice Skating class or have your child learn Tiny Tigers Karate, learn more about chemistry or let him express himself through the amazing world of clay. The City of Walnut Creek has something fun that fits for everyone. View the City of Walnut Creek's Activity Guide at www.walnut-creek.org

Walnut Creek Skate Park

(925) 256-3584

The Walnut Creek Skate Park is located at the corner of Heather Drive and Marchbanks Drive in Heather Farm Park, and is across from the Clarke Swim Center. Admission is free. Hours of operation are 8 a.m. to 9 p.m. The City requires that all skaters must wear a helmet and knee AND elbow pads in order to use the park.

Century 14 Downtown Walnut Creek

(925) 937-7025

1201 Locust St

The Century 14 in Walnut Creek is a new, top modern movie theater located near downtown Walnut Creek.

Encore gymnastics Dance and Climbing

(925) 932-1033

999 Bancroft Rd

Encore gymnastics Dance and Climbing has been providing children with a fun, safe learning environment since 1983. In their Olympic-equipped facilities, you will find a haven for building strong, healthy, happy kids. Encore offer tons of fun events for everyone, from all levels of gymnastic training, dance classes and wall climbing to birthday parties and other fun social and activity events.

Lindsay Wildlife Museum

(925) 935-1978

1931 First Ave

Connect with wildlife and learn about the animals found in our backyards and open spaces. At Lindsay Wildlife Museum you can have close encounters with many live, non-releasable wild animals such as an eagle, hawk, fox, snake or mountain lion. An on-site wildlife hospital treats more than 6,000 native California animals every year. The museum also features changing art and natural history exhibits, classes for children and adults, and a discovery room with hands-on activities for children.



PLACES TO EAT



Fine Dining & Steak House

Ruth's Chris Steak House

1553 Olympic Blvd
Walnut Creek, CA 94596
(925) 977-3477

Vic Stewart's

850 S Broadway
Walnut Creek, CA 94596
(925) 943-5666

Bing Crosby's Restaurant

1342 Broadway plaza
Walnut Creek, CA 94596
(925) 939-2464

Sea Food

Walnut Creek Yacht Club

1555 Bonanza St
Walnut Creek, CA 94596
(925) 944-3474

Scott's Seafood Grill & Bar

1333 N California Blvd
Walnut Creek, CA 94596
(925) 934-1300

Bistro & Wine

Va De Vi Bistro & Wine Bar

1511 Mount Diablo Blvd
Walnut Creek, CA 94596
(925) 979-0100

Le Bistro

1606 N Main St
Walnut Creek, CA 94596
(925) 407-8000

Italian & Pasta

IL Fornaio

1430 MT Diablo Blvd
Walnut Creek, CA 94596
(925) 296-0100

Prima Ristorante

1522 N Main St
Walnut Creek, CA 94596
(925) 935-7780

Montecatini

1528 Civic Dr
Walnut Creek, CA 94596
(925) 943-6608

Tomatina

1335 N Main St
Walnut Creek, CA 94596
(925) 930-9999

American

Lark Creek Walnut Creek

1360 Locust St
Walnut Creek, CA 94596
(925) 256-1234

Fuddruckers

1940 N Main St
Walnut Creek, CA 94596
(925) 943-1450

George's Giant Hamburger

1491 Newell Ave
Walnut Creek, CA 94596
(925) 939-4888

Chili's Grill & Bar

1403 Locust St
Walnut Creek, CA 94596
(925) 933-1251

Pizza

California Pizza Kitchen

1120 Broadway plz
Walnut Creek, CA 94596
(925) 938-0720

Mary's Pizza Shack

2246 Oak Grove Rd
Walnut Creek, CA 94598
(925) 938-4800

Cafe

Cafe La Scala

1655 N Main St
Walnut Creek, CA 94596
(925) 935-7779

Mexican

The Cantina

1470 N Broadway
Walnut Creek, CA 94596
(925) 946-1010

High Tech Burrito

1815 Ygnacio Valley Rd # B
Walnut Creek, CA 94598
(925) 938-3888

Asian

P F Chang's China Bistro

1205 Broadway plz
Walnut Creek, CA 94596
(925) 979-9070

Dalat Vietnamese Cuisine

1353 Locust St
Walnut Creek, CA 94596
(925) 926-0278

Koreana Kitchen

1546 Bonanza St
Walnut Creek, CA 94596
(925) 938-5959

Kaiwa Sushi

1534 Locust St.
Walnut Creek, CA 94596
(925) 274-9496

Pub

Crogan's Bar & Grill

1387 Locust St
Walnut Creek, CA 94596
(925) 933-7800

Pyramid Alehouse

1410 Locust St.
Walnut Creek, CA 94596
(925) 946-1520

SHOPPING



Broadway Plaza Shopping Center

1275 Broadway Plz
Walnut Creek, CA 94596

Broadway Plaza is an open-air regional shopping center located in the heart of downtown Walnut Creek. Broadway Plaza currently consists of 90 shops, services and restaurants. The shopping center's 25.4 acres is anchored by Nordstrom, Macy's Men's & Junior's and Macy's Women's & Home.

Although acknowledged quite frequently for its breathtaking exterior, which includes topiaries, sculptures and European-styled fountains, Broadway Plaza's retail mix has been ranked among the best as well. Voted "Best Shopping Center" for five consecutive years in Diablo Magazine's "Best of the East Bay" issue, Broadway Plaza eventually retired the category by continually outranking its competition.

Encina Grande Shopping Center

2941 Ygnacio Valley Rd
Walnut Creek, CA 94598

Countrywood Shopping Center

718 Bancroft Rd
Walnut Creek, CA 94598

Rossmoor Shopping Center

1924 Tice Valley Blvd
Walnut Creek, CA 94595

Palos Verdes Mall Shopping Center

1544 Palos Verdes Mall
Walnut Creek, CA 94598

Ygnacio Plaza Shopping Center

1821 Ygnacio Valley Rd
Walnut Creek, CA 94598

Nob Hill Shopping Center

2270 Oak Grove Rd
Walnut Creek, CA 94598

For Your Home - Shops

Cost Plus World Market

1697 Mt Diablo Blvd
Walnut Creek, CA 94596
(925) 287-0610
Furniture and Home Décor

Crate & Barrel

1115 Broadway Plaza
Walnut Creek, CA 94596
(925) 947-3500
Furniture and Home Décor

Restoration Hardware Inc

1460 Mt Diablo Blvd
Walnut Creek, CA 94596
(925) 906-9230
Furniture and Home Décor

Thomasville Furniture

1450 N California Blvd
Walnut Creek, CA 94596
(925) 287-9100

Sleep Train Mattress Centers

1245 S Main St
Walnut Creek, CA 94596
(925) 945-8307

Williams-Sonoma

1470 Mt Diablo Blvd
Walnut Creek, CA 94596
(925) 210-1215

Sur La Table

1211 Broadway Plaza
Walnut Creek, CA 94596
(925) 210-0103
Cookware & Cooking Utensils

3 Day Blinds

1575 Botelho Dr
Walnut Creek, CA 94596
(925) 943-1621
Window Shades Wholesale

Target

1871 N Main St
Walnut Creek, CA 94596
(925) 979-0083

Walnut Creek Lighting Co

1385 Newell Ave
Walnut Creek, CA 94596
(925) 256-6631

Walnut Creek ACE Hardware

2967 Ygnacio Valley Rd
Walnut Creek, CA 94598
(925) 935-6500

SIGHTSEEING

Points of Interest



Dean Leshor Regional Center for the Arts

1601 Civic Drive at Locust Street

The City's performing and visual arts center, opened in October 1990, houses the 800-seat Hofmann Theatre, the 300-seat Margaret Leshor Theatre, the 130-seat Knight Foundation Stage 3 theatre, the Bedford Gallery, offices and rehearsal space.

(925) 943-SHOW

Ticket Office

Walnut Creek Model Railroad Society

2751 Buena Vista Ave

The Walnut Creek Model Railroad Society's Diablo Valley Lines is a permanent, 1,800-square-foot model train layout in a large brown building leased by the City. The impressive HO-scale train set has more than 4,300 feet of laid track on over 175,000 individual ties and more than 340 turnouts. Public viewing areas surround the entire layout and can accommodate up to 150 people an hour. The club's annual Fall Show is held over the weekend in November.

(925) 937-1888

The Gardens at Heather Farm

1540 Marchbanks Dr

Site of extensive demonstration gardens teaching gardening techniques in a Zone 14 climate. The Gardens at Heather Farm is home to 700 individual members and 43 garden clubs. A large meeting room is available for rental.

(925) 947-1678

Galleries and Museums

Bedford Gallery

1601 Civic Dr

Bedford Gallery exhibits the work of historic, modern, and contemporary artists. The Gallery is dedicated to providing the public with opportunities to learn about visual arts through public programs that are varied, accessible, challenging, and educational. With 3,500 square feet of exhibition space, Bedford Gallery is the largest community-based visual arts facility between the Bay Area and Sacramento. This contemporary art space is housed in the City of Walnut Creek's Dean Leshor Center for the Arts, which also contains three theaters.

(925) 295-1417

Shadelands Ranch Historical Museum

2660 Ygnacio Valley Rd

Built by Walnut Creek pioneer Hiram Penniman, this 1903 redwood-framed house is a showcase for numerous historical artifacts, many of which belonged to the Pennimans. It also houses a rich archive of Contra Costa and Walnut Creek history in its collections of old newspapers, photographs and government records.

(925) 935-7871

The Paint Palette

1347 Locust St
Walnut Creek
(925) 939-7810

Sagebrush Galleries

351 Clarkin CT
Walnut Creek
1-888-943-SAGE

Valley Art Gallery

1661 Botelho Drive, Suite 110
Walnut Creek
(925) 935-4311





SCHOOLS

Walnut Creek School District

(925) 944-6850

Mt. Diablo Unified School District

(925) 682-8000

Acalanes Union High School District

(925) 280-3900

Elementary Schools

Bancroft Elementary

(925) 933-3405

2200 Parish Drive

Mt. Diablo Unified School District

Murwood Elementary

(925) 943-2462

2050 Vanderslice Ave.

Walnut Creek School District

Valle Verde Elementary

(925) 939-5700

3275 Peachwillow Lane

Mt. Diablo Unified School District

Buena Vista Elementary

(925) 944-6822

2355 San Juan Ave.

Walnut Creek School District

Parkmead Elementary

(925) 944-6858

1920 Magnolia Way

Walnut Creek School District

Walnut Acres Elementary

(925) 939-1333

180 Cerezo Drive

Mt. Diablo Unified School District

Indian Valley Elementary

(925) 944-6828

551 Marshall Dr.

Walnut Creek School District

Walnut Heights Elementary

(925) 944-6834

4064 Walnut Blvd.

Walnut Creek School District

Middle Schools

Walnut Creek Intermediate

(925) 944-6840

2425 Walnut Blvd.

Walnut Creek School District

Foothill Middle

(925) 939-8600

2775 Cedro Lane

Mt. Diablo Unified School District

High Schools

Las Lomas High School

(925) 280-3920

1460 South Main St

Acalanes Union High School District

Northgate High School

(925) 938-0900

425 Castle Rock Road

Mt. Diablo Unified School District

Ygnacio Valley High School

(925) 685-8414

755 Oak Grove Road, Concord

Mt. Diablo Unified School District

Colleges & Universities

California State University, East Bay Concord Campus

(925) 602-6700

4700 Ygnacio Valley Road
Concord

Diablo Valley College

(925) 685-1230

321 Golf Club Road

Pleasant Hill

Golden Gate University

(925) 945-7132

1990 N California Blvd # 20

Walnut Creek

John F. Kennedy University

1-800-696-5358

100 Ellinwood Way

Pleasant Hill

SCHOOL SCORES



Academic Performance Index

Academic Performance Index (API) is the state's method of combining test scores across all subjects and grade levels.

The API is a numeric scale that ranges from a low 200 to a high of 1000. The API is a way of comparing schools based on students test scores. The index was created in 1998 to help parents and educators better understand how schools were doing.

Elementary Schools	API Score in 2005	Change from Prior year	County Average	State Average
Bancroft Elementary	901	-6	830	752
Buena Vista Elementary	879	+12	830	752
Indian Valley Elementary	921	+38	830	752
Murwood Elementary	878	+2	830	752
Parkmead Elementary	901	-4	830	752
Valle Verde Elementary	933	+24	830	752
Walnut Acres Elementary	920	+10	830	752
Walnut Heights Elementary	903	-3	830	752



SCHOOL SCORES



Academic Performance Index

Academic Performance Index (API) is the state's method of combining test scores across all subjects and grade levels.

The API is a numeric scale that ranges from a low 200 to a high of 1000. The API is a way of comparing schools based on students test scores. The index was created in 1998 to help parents and educators better understand how schools were doing.

Middle Schools	API Score in 2005	Change from Prior year	County Average	State Average
Walnut Creek Intermediate	876	+9	768	716
Foothill Middle	863	+7	768	716

High Schools	API Score in 2005	Change from Prior year	County Average	State Average
Las Lomas High School	818	+18	733	696
Northgate High School	836	+13	733	696
Ygnacio Valley High School	697	+26	733	696

